



ROBINSON
MARSH



0000 Harbour Way, London, E14 9DN

£4,900 Per Month



3



2



1



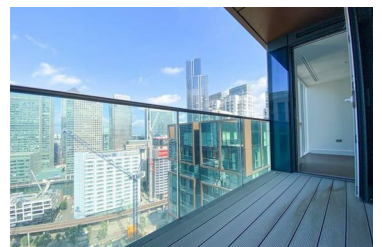
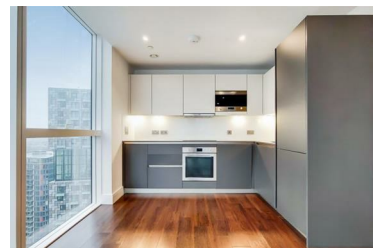
B

Robinson Marsh present a lovely flat to rent on Harbour Way comprising 3 bedrooms and 2 bathrooms.

The apartment comprises 3 spacious double bedrooms, an open-plan kitchen, reception and dining room. Maine Tower is part of the Harbour Central development, Isle of Dogs, E14.

Available from the 8th of September, covering 1,161 sq. ft. in living space and situated on the 32nd floor, this modern property comes with big windows, ample storage, and a private balcony. Residents can further enjoy a gym and a 24-hour concierge.

Further features and amenities include:



SQB 77 Marsh Wall, Canary Wharf, London, E14 9SH

Tel: 02078681444 Email: info@robinsonmarsh.com www.altosoftware.co.uk